

**Brief Specification: Profiled Steel**  
 1.6mm Panels: 2 Corri Profile  
 Base Plates: Extended Slotted  
 Top Plates: Extended Top Lift  
 Jacklegs: Brackets Only  
 Lifting Points: Top Corner Only  
 Forklift Tunnels: -  
 Staircase Fixings: Fixing Bolts  
 Link Frame: -  
 Ceiling Height: 2400mm  
 Insulation: See Table  
 NB: 180mm Plinth

**External Finish: Mid-Sheen**  
 Body: -  
 Corners: -  
 Plinth: -  
 Fascia: -  
 Jacklegs: -  
 Door: -  
 Shutters: -  
 Finishes are indicative. It is the client's responsibility to ensure these are correct

BS 10 A 05 'Grey'  
 BS 10 A 05 'Grey'  
 BS 10 A 05 'Grey'  
 BS 10 A 05 'Grey'  
 BS 10 A 05 'Grey'

**Window: W01**  
 White finish uPVC double glazed PAS24 Double Casement - Single Side Opener 1250 x 880h frame @ 1050mm affl Obscured K Glass  
 Trickle vents  
 Locks

**Window: W02**  
 White finish uPVC double glazed PAS24 Single Casement Side Opener 900 x 880h frame @ 1050mm affl K glass  
 Trickle vents  
 Locks

**Window: W03**  
 White finish uPVC double glazed PAS24 Double Casement - Double Side Opener 1500 x 1080h frame @ 1050mm affl K glass  
 Trickle vents  
 Locks

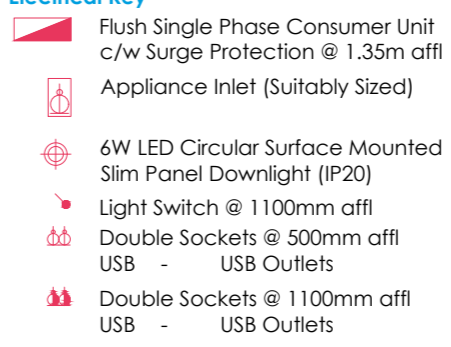
**Door:**  
 White finish uPVC double glazed PAS24 Double Casement - Double Side Opener To suit structural opening 920 x 2100h frame K glass  
 Trickle vents  
 Locks

**Key**  
 Solid core doors pre finished in oak  
 Latch: Mortice Latch  
 BL: Bathroom Lock  
 MCW: Mains Cold Water Inlet  
 WO: Waste Outlet  
 Waste & Water Protected By Steel Shroud

**Plumbing**  
 Lamona Inset S/S Sink SNK6971 c/w Mixer Tap  
 BTW WC c/w Concealed Cistern & Flush Plate  
 Bristan Zing Thermostatic Bar Shower c/w Riser  
 Bristan Cadet Mixer Tap (WHB)  
 Plastic Pipework

**Internal Finish**  
 Wall Finish: Matt White Anti-Fungal Paint  
 Ceiling Finish: Matt White Anti-Fungal Paint  
 Floor Finish: Polysafe Wood FX PUR 3376 'Tropical Pine'  
 Window Sills: Grey (RAL 7046)  
 Internal Door Architrave: Grey (RAL 7046)  
 100mm Timber Skirting: Grey 2 Part  
 Worktop / Vanity Top: 38mm Sq. Edge Oak Effect  
 Howdens Base Units: Greenwich White Gloss  
 Vanity: Low Height Wall

**Kitchen**  
 Integrated Oven & Hob c/w Extract Hood  
 Integrated Fridge c/w Ice Box  
 HLBU600  
 DLBU300  
 WU600

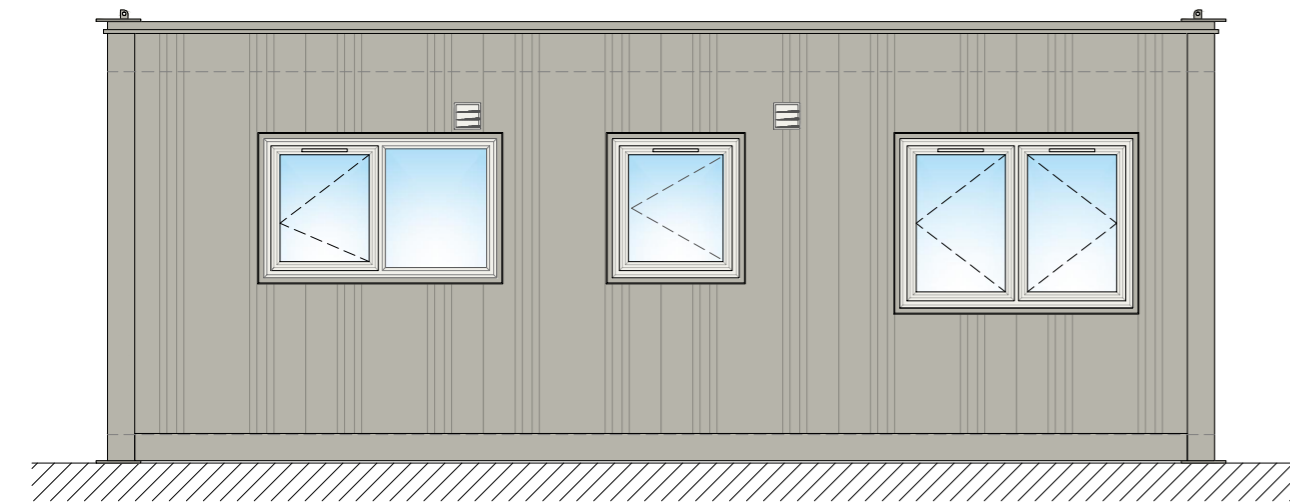
**Electrical Key**  
  
 Flush Single Phase Consumer Unit c/w Surge Protection @ 1.35m affl  
 Appliance Inlet (Suitably Sized)  
 6W LED Circular Surface Mounted Slim Panel Downlight (IP20)  
 Light Switch @ 1100mm affl  
 Double Sockets @ 500mm affl  
 Double Sockets @ 1100mm affl  
 USB - USB Outlets

  
 Telephone Socket @ 500mm affl  
 Shaver Socket @ 1100mm affl  
 Consort PLE-RF Panel Heater (Size Stated) c/w Onboard Controller  
 Consort MRX1 Multizone Wireless Controller  
 9kW Aures Instantaneous Water Heater  
 Extract Fan (Size Stated)  
 T - Timer  
 Linked to Lighting

Tolerance: ±2mm  
 Timber Framing: 45mm  
 Prod. No.: -  
 Fleet No.: -  
 Slickers: -  
 I.D. Plate: -  
 Module Weight: -  
 Laden Weight: -  
 Max. Lift Weight: -

Insulation			
Element	Type	Thickness	U-Value
Roof	K107	100mm	0.17W/m2/.K
Walls	K107	70mm	0.22W/m2/.K
Floor	K107	40mm	0.21W/m2/.K
	Cladding Matt 35	100mm	

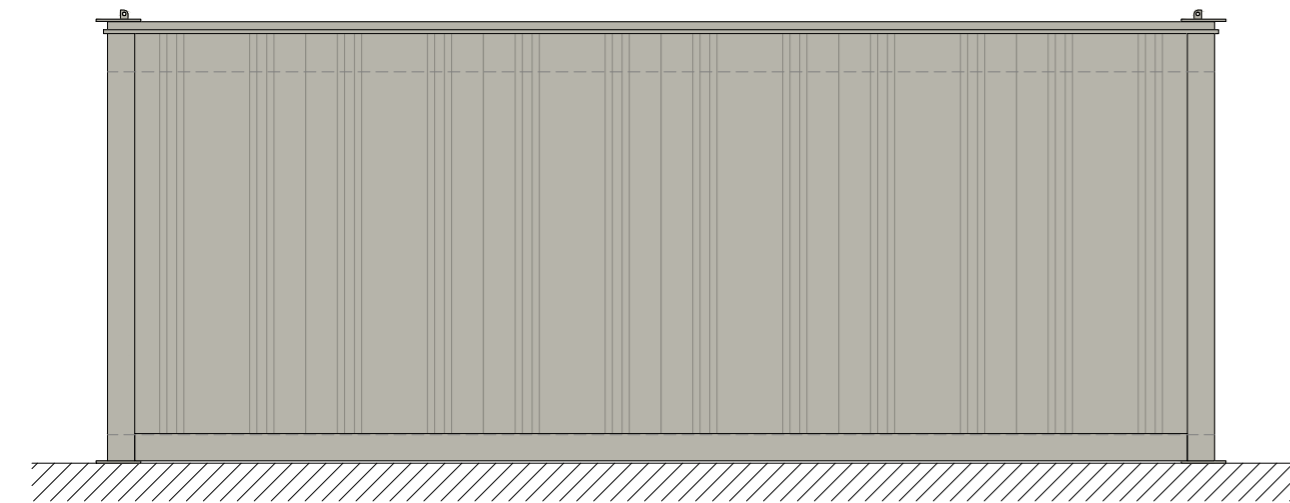
**Notes**  
 Insulation is in line with the current Approved Document L1A for England as a baseline assumption. The client must seek guidance from their local planning department & building control. Cabins can be stacked two high only.



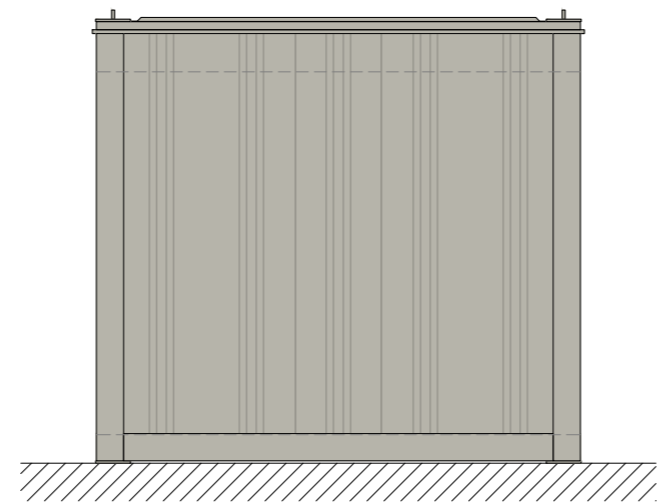
A External View  
1:50



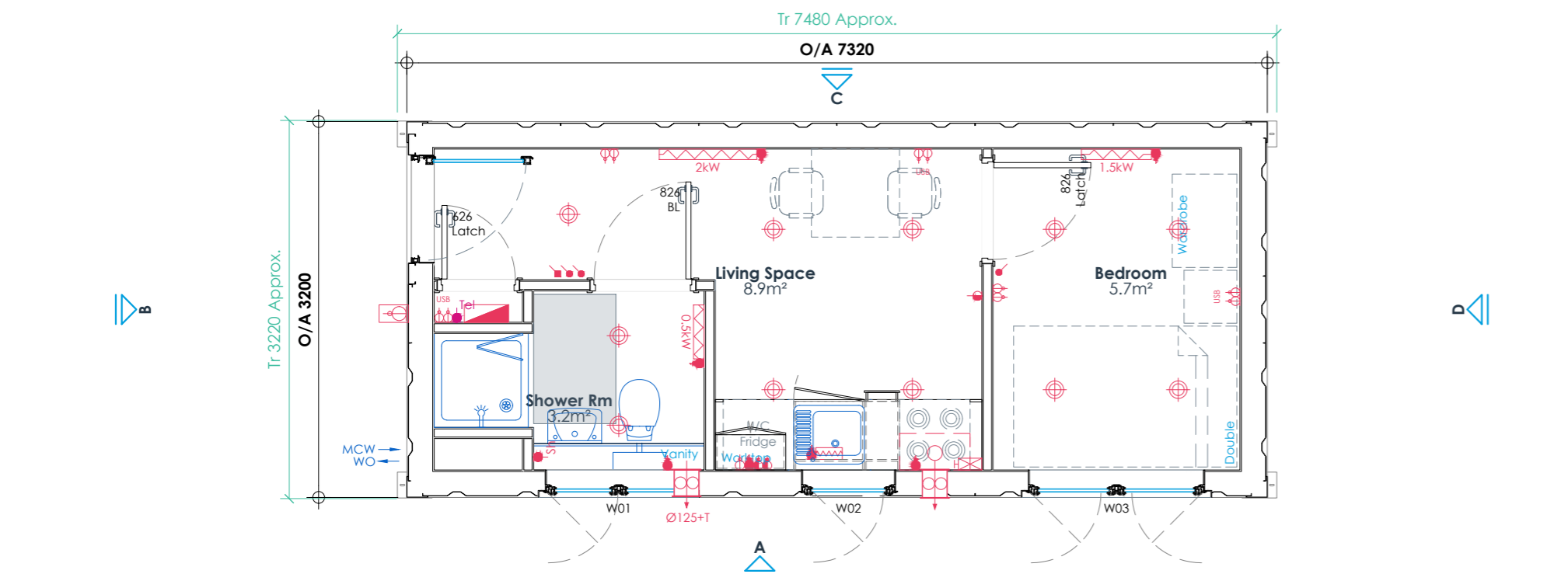
B External View  
1:50



C External View  
1:50



D External View  
1:50



00 General Arrangement  
1:50

P01	First Issue	ST/R/C	15.11.21
rev	description	by/chk	date



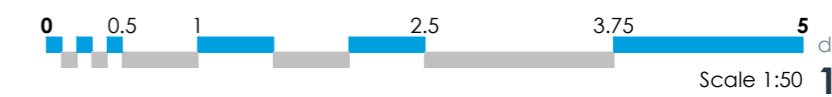
client:

project:  
**Residential Cabin**

title:  
**General Arrangement**

date: 15.11.21  
 design lead: ST  
 project ref: 2122907

checked: RC  
 scale @ A2: As Shown



**PRELIMINARY**  
 dwg ref: 100  
 rev: P01