

**Brief Specification: Profiled Steel**

1.6mm Panels: 2 Corri Profile  
 Base Plates: -  
 Top Plates: -  
 Jacklegs: -  
 Lifting Points: Top Corner  
 Forklift Tunnels: -  
 Staircase Fixings: Fixing Bolts  
 Link Frame: -  
 Ceiling Height: 2400mm  
 Insulation: See Table  
 NB: 260 x 75mm 27.6kg/m

**External Finish: Mid-Sheen**

Body: TBC  
 Corners: TBC  
 Plinth: TBC  
 Fascia: TBC  
 Jacklegs: -  
 Door: TBC  
 Shutters: -  
 Zinross 250  
 Finishes are indicative. It is the client's responsibility to ensure these are correct

**External Door: D01**

PAS24 Compliant uPVC Door  
 Odd Leg Frame to suit aperture 920 x 2100mm  
 Low threshold & inward opening  
 U-Value: 1.6W/m²K  
 Top Panel: Clear Glazed  
 Bottom Panel: Molded Infill  
**Key**  
 L: Latch  
 BL: Bathroom Lock  
 WO: Waste Outlet  
 MCW: Mains Cold Water Inlet

**Window: W01 (FOV)**

PAS24 compliant uPVC window  
 914w x 1080h frame @ 1000mm affl  
 Window Opener @ 850mm affl  
 U-Value: 1.6W/m²K  
**Window: W03 (FOV)**  
 PAS24 compliant uPVC window  
 914w x 400h frame @ 1680mm affl  
 Window Opener @ 850mm affl  
 U-Value: 1.6W/m²K

**Internal Finish**

Wall Finish: White Vinyl Faced Plasterboard  
 Ceiling Finish: White Vinyl Faced Plasterboard  
 Floor Finish: Polysafe Wood FX 3376 'Tropical Pine'  
 Bathroom Floor Finish: Polysafe Hydro H4850 'Blue Forge'  
 Skirting: 100mm Pencil Round MDF 'White'  
 Internal Door Architrave: White  
 Worktop: 38mm Sq. Edge Oak Effect  
 Howdens Base Units: Greenwich White Gloss  
 Internal Doors: Oak Veneer Solid Core Doors  
 Window Sills: White Bullnose Laminate

**Plumbing**

Lamona Inset S/S Kitchen Sink  
 Lamona Lever Mixer Tap  
 Lecico Doc M Ceramic WC Pan c/w Soft Close Lid  
 Lecico 1TH Sq. WHB c/w Bottle Trap  
 Lecico 59cm 1TH Sq. WHB c/w Bottle Trap  
 Single WHB Lever Mixer Tap  
 Wetroom Floor c/w Hygienic PVC wall lining

**Notes**

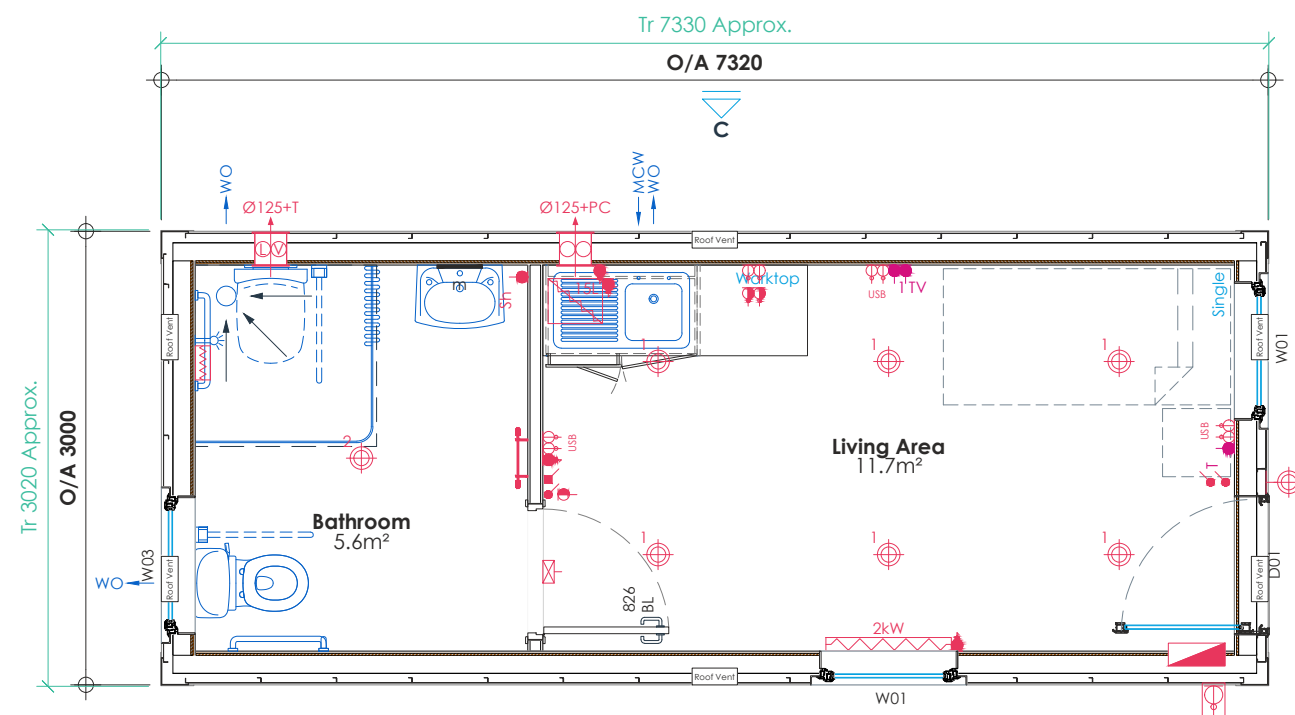
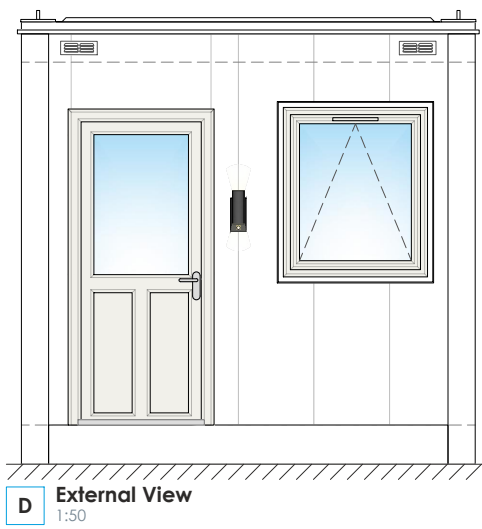
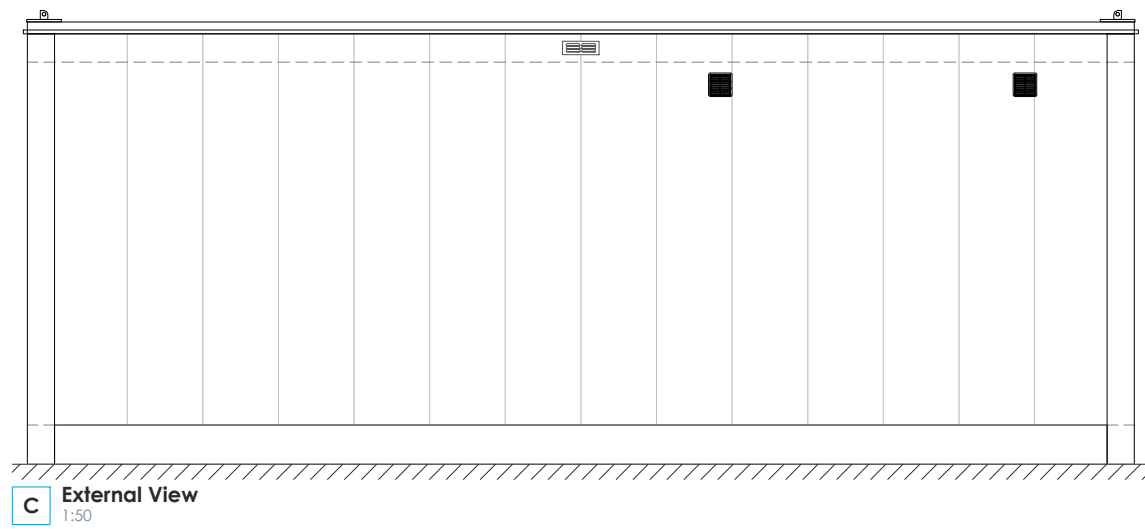
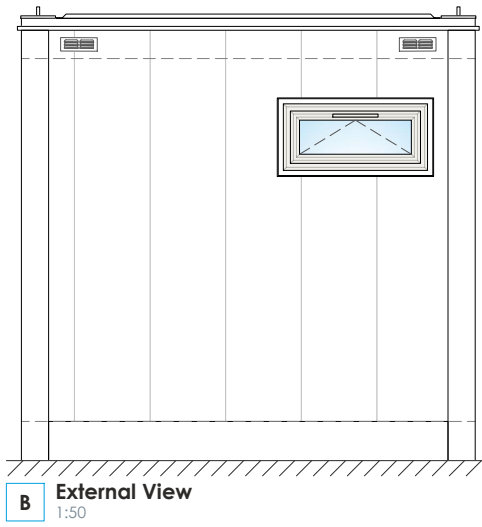
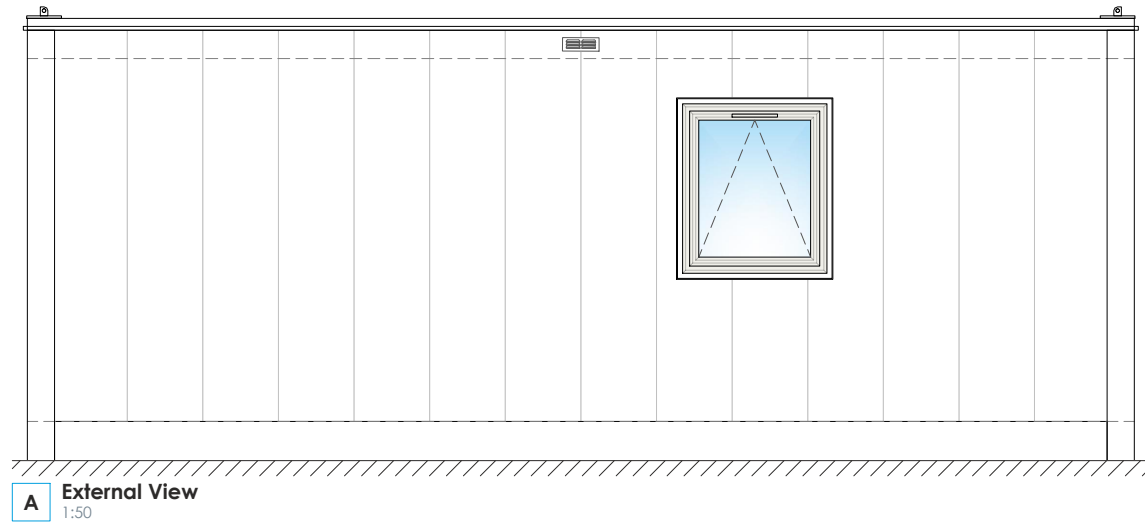
Insulation is inline with the current Approved Document L for England as a baseline assumption. The client must seek guidance from their local planning department & building control.

Tolerance: ±2mm  
 Timber Framing: 70mm  
 Partition Framing: 70mm  
 Prod. No.: -  
 Fleet No.: -  
 Stickers: -  
 I.D. Plate: -  
 Module Weight: -  
 Laden Weight: -  
 Max. Lift Weight: -

Thermal Envelope			
Element	Type	Thickness	U-Value
Roof	Solid Foam	80mm	0.16W/m2/.K
	Solid Foam	60mm	
Walls	Solid Foam	50mm	0.26W/m2/.K
	Mineral Wool	60mm	
Floor	Solid Foam	60mm	0.18W/m2/.K
	Mineral Wool	150mm	

**Electrical Key**

- Single Phase Flush Consumer Unit c/w Surge Protection
- Appliance Inlet (Suitably Sized)
- LED Circular Panel Light (Surface Mount)
  - 1 - 6W (GL CPL6CT)
  - 2 - 24W (GL CP24CT)
- LED Up & Down Wall Light c/w Integrated PIR
- Light Switch (Grid Switches)
- Double Sockets c/w USB Sockets @ 500mm affl
- Double Sockets c/w USB Sockets @ 1067mm affl
- Aerial (TV) Sockets @ 500mm affl
- Telephone Sockets @ 500mm affl
- Shaver Sockets @ 1067mm affl
- Consort Claudgen PLE-RF Panel Heater (Size Stated) c/w RF Receiver & Onboard Controller
- Consort Claudgen Multizone MRX1 Wireless Controller
- Consort Claudgen LTR300C Towel Rail
- 2kW Water Heater (Size Stated)
- 7.5kW Electric Shower c/w Wall Switch Isolator
- Extract Fan (Size Stated)
  - PC - Pull Cord + Timer Linked to Lighting
  - SELV Extract Fan (Size Stated)
    - T - Timer Linked to Lighting
    - Fan Controller & Transformer



rev	description	by/chk	date
P01	First Issue		



client:  
 project: **Residential Cabins**  
 title: **Pip**

date: 07.06.22  
 project ref: 2223632  
 design lead: ST  
 checked: SF  
 scale @ A2: As Shown