

Brief Specification: Profilled Steel
 1.6mm Panels: 2 Corri Profile
 Base Plates: -
 Top Plates: Std Top Corner Lift
 Jacklegs: -
 Lifting Points: -
 Forklift Tunnels: -
 Staircase Fixings: -
 Link Frame: -
 Ceiling Height: 2400mm
 Insulation: See Table
 NB. Steel Floor Panel

External Finish: Mid-Sheen
 Body: RAL 6004 'Green'
 Corners: RAL 6004 'Green'
 Plinth: RAL 6004 'Green'
 Fascia: RAL 6004 'Green'
 Door: White

Finishes are indicative. It is the client's responsibility to ensure these are correct

Window: W01
 uPVC double glazed PAS24 1.6W/m2.K
 Double Casement - Single Side Opener
 1250 x 1080h frame @ 970mm affl
 Obscured K Glass
 Trickle vents
 Locks

Window: W02
 White finish uPVC double glazed PAS24
 Single Casement - Side Opener
 600 x 1080h frame @ 970mm affl
 K glass
 Trickle vents
 Locks

Window: W03
 uPVC double glazed PAS24 1.6W/m2.K
 Double Casement - Single Side Opener
 1250 x 1080h frame @ 970mm affl
 K Glass
 Trickle vents
 Locks

Door:
 uPVC double glazed PAS24 1.6W/m2.K
 Low Threshold
 Inward Opening
 To suit structural opening 920 x 2100h frame

Key
 Solid core doors pre finished in oak
 Latch: Mortice Latch
 BL: Bathroom Lock
 MCW: Mains Cold Water Inlet
 WO: Waste Outlet
 Waste & Water Protected By Steel Shroud

Internal Partitions construction
 All Partitions 70 x 35mm framing @ 407 ctrs
Type G 15mm plasterboard each side:
Type F as **Type G** c/w 50mm sound insulation:

Internal Finish
 Wall Finish: White Vinyl Faced Plasterboard
 Ceiling Finish: White Vinyl Faced Plasterboard
 Floor Finish: Polysafe Wood FX PUR 3376 Tropical Pine
 Window Sills: Grey (RAL 7046)
 Internal Door Architrave: Grey (RAL 7046)
 100mm Timber Skirting: Grey (RAL 7046)
 Worktop Top: 38mm Sq. Edge Oak Effect
 Howdens Base Units: Greenwich White Gloss

Plumbing
 800mm Inset S/S Sink c/w Mixer Tap
 Ceramic WC & Cistern
 Bristan Cadet Mixer Tap (WHB)
 Bristan Frenzy Thermostic Bar Shower c/w Riser & Handset
 800 x 800 4UPS Tray c/w Curtain
 Plastic Pipework

Tolerance: ±2mm
Timber Framing: 70mm
Partition Framing: 70mm
Prod. No.: -
Fleet No.: -
Stickers: -
I.D. Plate: -
Module Weight: -
Laden Weight: -
Max. Lift Weight: -

Insulation			
Element	Type	Thickness	U-Value
Roof	K107	120mm	0.15W/m2/.K
Walls	K107	70mm	0.22W/m2/.K
Floor	K107	70mm	0.16W/m2/.K
	Cladding Matt 35	100mm	

Notes
 Insulation is inline with the 2020 Technical Handbook (Scotland) Domestic as a baseline assumption.
 The client must seek guidance from their local planning department & building control.

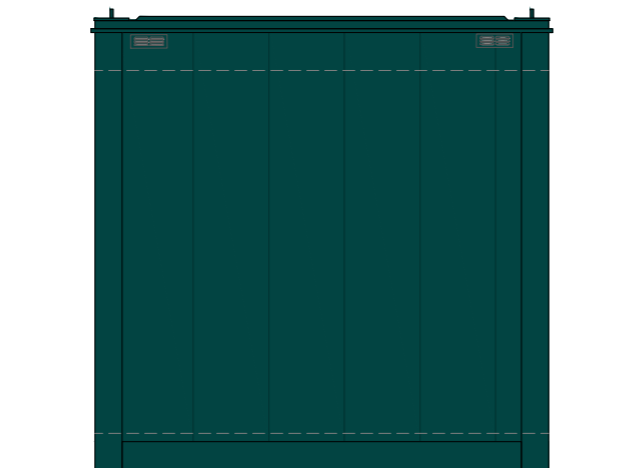
- Electrical Key**
- Flush Single Phase Consumer Unit c/w Surge Protection @ 1.35m affl
 - Appliance Inlet (Suitably Sized)
 - Knightsbridge 6W LED Circular Surface Mounted Slim Panel Downlight (IP20)
 - Light Switch @ 1100mm affl
2 - 2 Way
 - Double Sockets @ 500mm affl
 - Double Sockets @ 1100mm affl
 - Shaver Socket @ 1100mm affl
 - Consort PLE-RF Panel Heater (Size Stated) c/w Onboard Controller
 - Consort MRX1 Multifzone Wireless Controller
 - Ariston Aures Instantaneous Water Heater
 - Low Carbon Extract Fan
T - Timer
PC - Pull Cord + Timer

Steel Components		
Reference	Component	Size
1	Floor Panel (PFC)	200 x 75 x 23.4
2	Joist (ITLC)	127 x 50 x 2
3	Galv Tray	97mm
4	Angle	25 x 25 x 3
5	Flat Wall Panel	2770 x 1.6
6	Top Plate	220 x 220 x 15
7	Profilled Roof Panel	1220 x 1.6
8	J-Gutter	

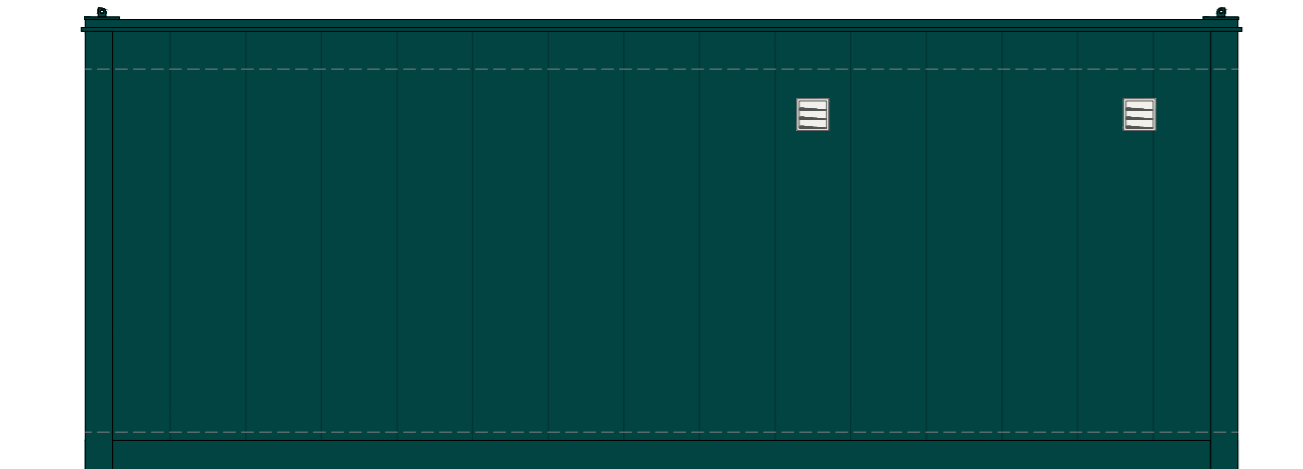
Timber Components		
Reference	Component	Size
A	Cladding Matt 35	100mm
B	Ply Sub Deck	12mm
C	K107 Insulation	70mm
D	Ply Top Deck	18mm
E	Vinyl Floor	2mm
F	Plasterboard c/w Skim	15mm
G	Stud Wall	70 x 35mm
H	Roof Joist	120 x 35mm
J	K107 Insulation	120mm



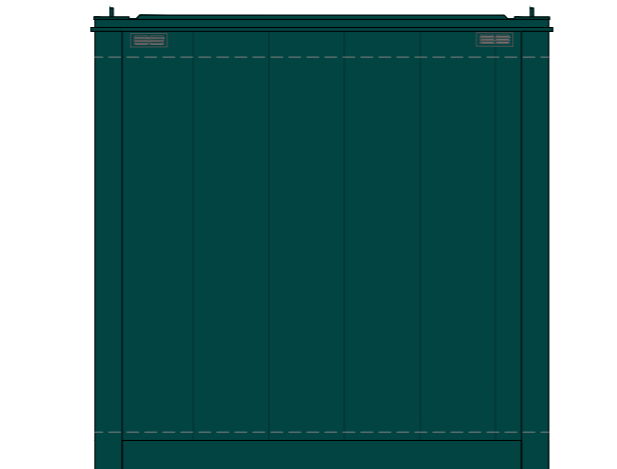
A External View
1:50



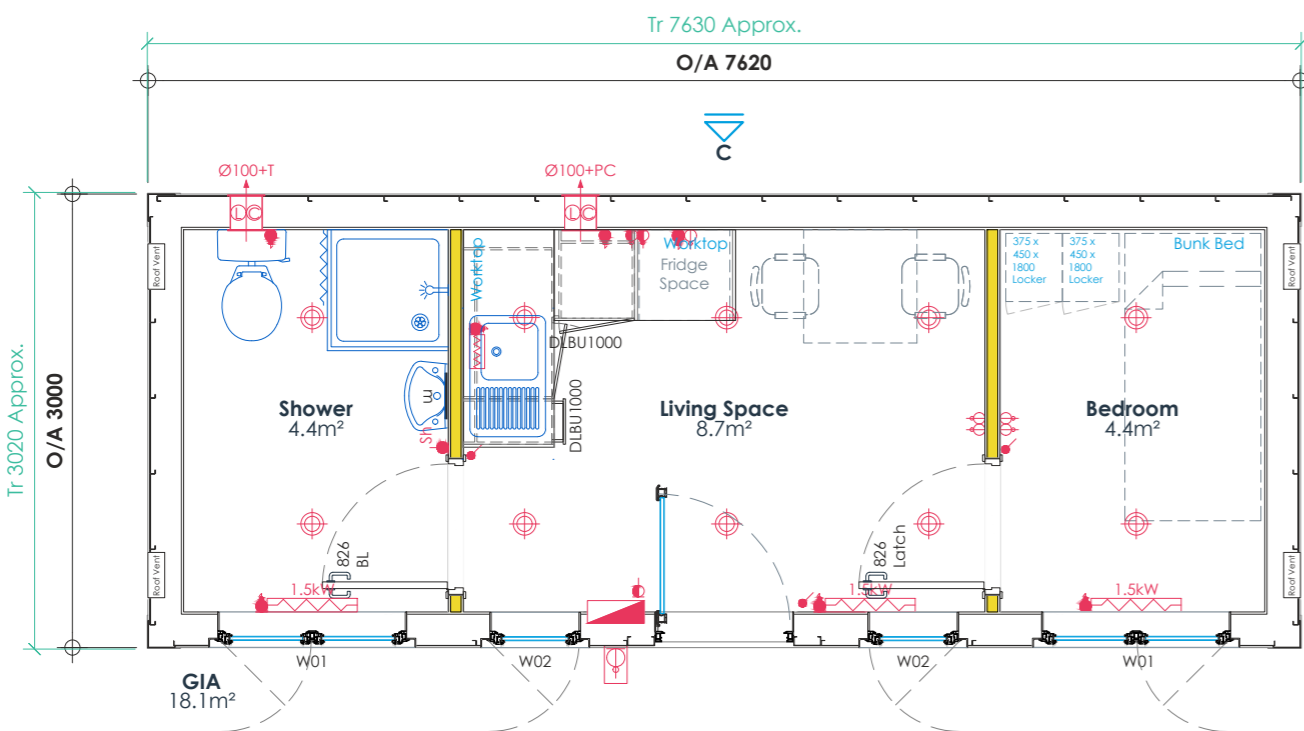
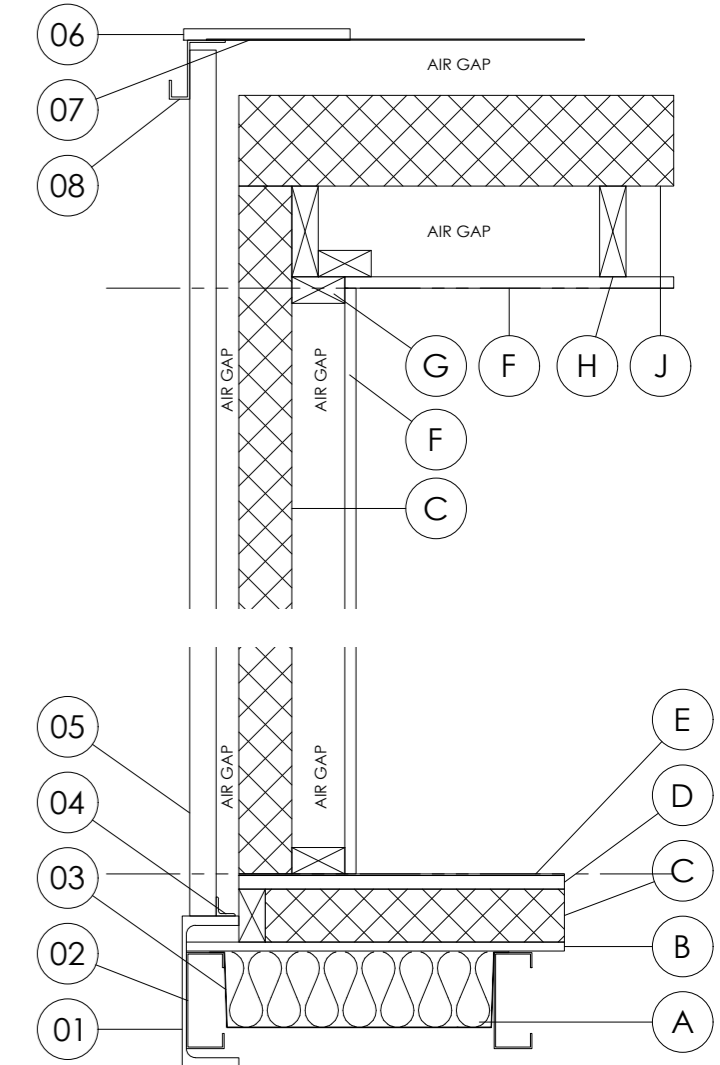
B External View
1:50



C External View
1:50



D External View
1:50



00 General Arrangement
1:50

NB. Furniture is shown for illustration only

rev	description	by/chk	date
P03	Revised to client comments, bunk bed indicated	ST	24.02.22
P02	Revised to client comments, unit size reduced - layout adjust accordingly	ST/SF	17.2.22
P01	First issue	ST/SF	03.02.22

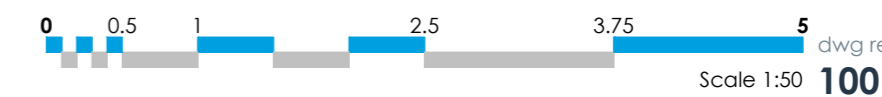


client:
Smeaton

project:
Dwelling

title:
General Arrangement

date: 03.02.22
 design lead: ST
 checked: SF
 project ref: 2223262
 scale @ A2: As Shown



PRELIMINARY
 dwg ref: 100
 rev: P03