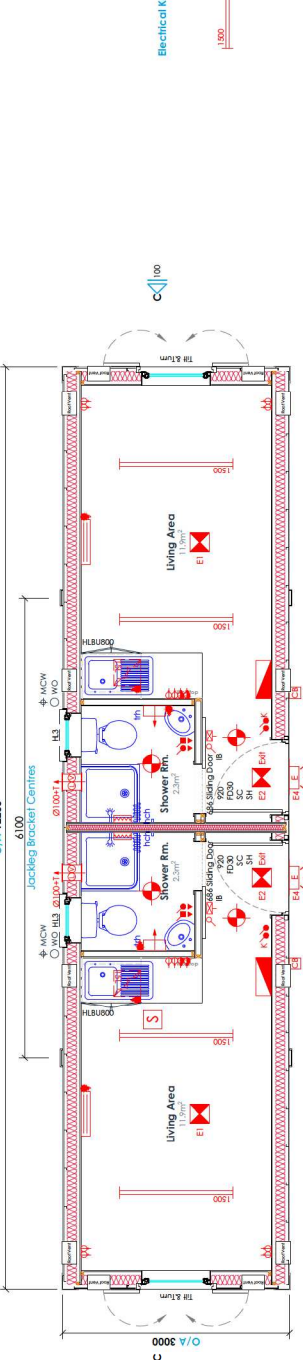


do not scale from drawing

Tolerance: **±2mm**
 Grid Line Spacing: **70mm**
 Grid Line Offset: **±10mm**
 Floor No: **-**
 Slickers: **-**
 I.D. Plate: **-**

Module Weight: **-kg**
 Laden Weight: **-kg**
 Max. Lift Weight: **-kg**



General Arrangement
 1:50

Electrical Key

- Distribution Board 17th Edition
- Galvanised Connection Box
- 1500 High Frequency Linear Light c/w Driver
- 2D Combined Emergency Bulhead
- 2kW Convector Heater
- 2kW Down Flow Heater
- Double Sockets @ 500mm affl
- Double Sockets @ 1067mm affl
- Light Switch
- Pull Cord Switch
- 0100 Low Voltage Extract Fan c/w Timer
- Fan Controller & Transformer
- 7kW Electric Shower c/w Pull Cc
- 1.5L Under Sink Water Heater

Fire & Emergency Lighting

- Mains Linked Smoke Alarm
- Internal 3hr Non-Maintained Emergency Light
- Internal 3hr Non-Maintained Emergency Light c/w Exit Sign
- External 3hr Maintained Emergency Light
- Test Switch

Brief Specification

Flat Steel
 S14 Stiffed
 Locating Lug
 Low Level Jackleg Ball Plate
 Firing Bolts
 400mm
 120mm PV
 12mm PV
 2mm Superglass
 5mm Superglass
 125mm Superglass
 150mm Superglass
 180mm Plinth
 2485mm panels

External Finishes - Mid-Sheen

Main Body: TBC
 Fascia & gutters: TBC
 Architraves: TBC
 Door: TBC
 Shutters: TBC

Internal finish - General

White Vinyl Faced Plasterboard
 White Vinyl Faced Plasterboard
 Corallo 9120
 Non-Slip Floor PolySafe
 Plastic Door & Window Linings: White Timber
 Internal Door Architrave: White
 White 2 Part
 White 2 Part
 To Sill Board Finish
 H Sections: White 2 Part
 29mm Butchers Block
 Worktops: Howdens Greenwich White Glass

Internal finish - Shower Room

White Vinyl Faced Plasterboard
 BCClud
 Silver Birch 4020
 Plastic Door & Window Linings: White Timber
 Internal Door Architrave: White Timber
 Plastic Slipping: White & Cove
 Top Lath: White 2 Part
 H Sections: To Sill Board Finish
 Internal Corners: White Angle

Windows - uPVC

White finish double glazed 1&1/4 x 914mm
 @ 980mm affl c/w Kincroft Shutter
 Frame @ 1620mm affl c/w Gaby Meak Guard

Key

Solid core doors pre finished in white oak
 2x5DL: 2 x 5 Lever Deadlock
 3C: Silver Catch
 IB: Indicator Bolt
 FD30: 30 Minute Fire Door
 SC: 20N Self Closer
 H&C: Hat & Coat Hook
 M: Mirror
 SVP: Sill & Vent Pipe (Waste Out)
 MCW: Mains Cold Water In

Plumbing Notes

Stainless Steel Sit-In Sink
 Dudley Shimline Contract cisterns
 Searay Pattern Taps
 Plastic nut-fit pipework

Internal Partitions construction

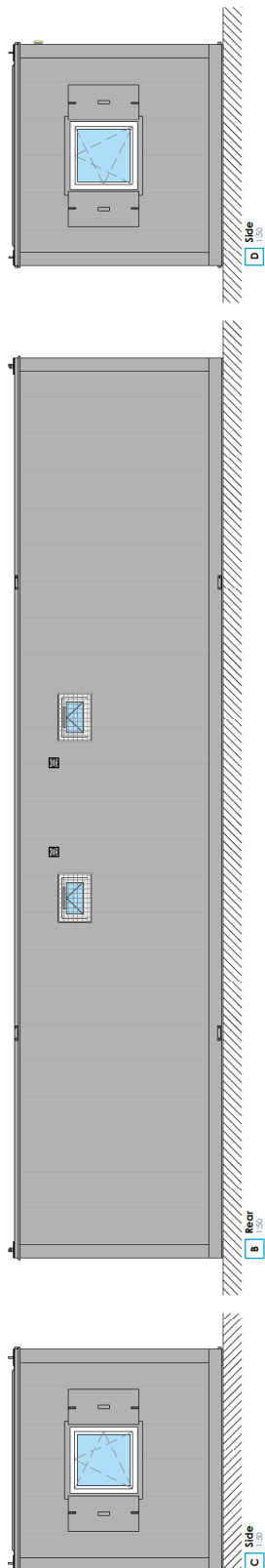
All partitions 75mm thick
 plasterboard finish same as external walls,
 Standard framing c/w 12.5mm pl/bd each
 side (Type G) thus:

FR120 partition taken up to roof 21pages
 15mm pl/bd both sides + 45kg insulation;

FR60 partition taken up to roof 15mm pl/bd
 both sides + 45kg insulation;

FR40 finish taken up to roof 15mm pl/bd one
 side + 45kg insulation;

NB: Party wall to be infumescant sealed at
 wall/interface



Front
 1:50

Rear
 1:50

Side
 1:50

Client: **Tight Talk**
 Project: **40' x 10' Housing Unit**
 06.5686.V.18
 Title: **General Arrangement**

Date: **02.07.18** Scale: **1:50@A2**
 Drawn: **ST**
 Dwg No: **06.5686.100** Rev: **P01**



P01 Rev Description By Date
 ST 02.07.18

