

Brief Specification

1.6mm panels:
Base Plates:
Top Plates:
Jacklegs:
Lifting Points:
Forklift Tunnels:
Unit Height:
Panel Height:
Ceiling Height:
Insulation:
Construction:

Flat Steel
Extended Slotted
Extended Top Lift
-
Top Corner & Mid High Level
-
2830mm
2550mm
2400mm
Roof: 0.17 W/m²K
Walls: 0.23 W/m²K
Floor: 0.21 W/m²K
Steel Floor Panel 200 x 90 PFC
50 x 50 SHS Mid-Support Posts
100mm Box Gutter
60 x 60 SHS Downpipes
Steel Underdrawn

External Finish (2 Coat + Etch Primer)

Body:
Corners:
Plinth:
Fascia & Gutter:
Windows:
Door:
Stairs:
Fan Grilles:
NB:
Finishes are indicative therefore it is the client's responsibility to ensure these are correct

BS 00 E 55
BS 00 E 55
BS 00 E 55
RAL 7016
RAL 7016
White

Internal Finish

Wall Finish:
Ceiling Finish:
Floor Finish:
Timber Door Linings & Sills:
Internal Door Architrave:
100mm MDF Skirting:
Shower Room Skirting:
Elfin Kitchen:

Anti-Fungal Matt White
Anti-Fungal Matt White
Polysafe Wood fx PUR 3387 'American Oak'
RAL 7046
RAL 7046
RAL 7046
100mm Cap & Cove
M-150-Mos-C-RH c/w Cupboard backs
1000 Wall Unit c/w Pelmet
Extract Hood (To Outside)
600mm Larder Unit
Stainless Steel Splashback & Cheeks

Internal Partitions construction

All Partitions 70 x 35mm framing @ 407 ctrs
Type G 15mm pl/bd foil backed each side:
Type F as Type G c/w 50mm sound insulation:
Plumbing Notes
Elfin Kitchen
Dual Flush WC c/w Ceramic Cistern
Copper pipework
Lever Reduced Flow Mixer Spray Pattern Taps
Wet Room Shower Area

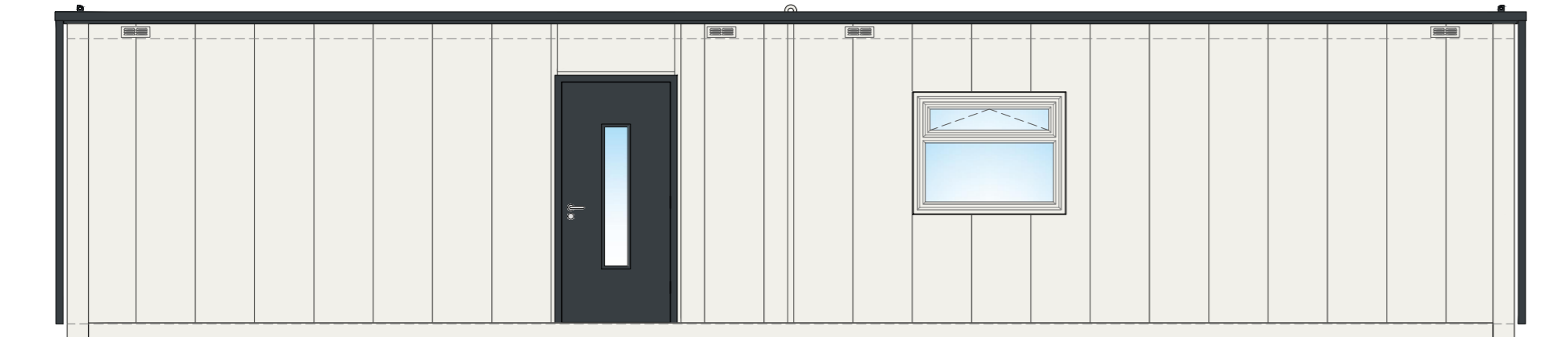


uPVC TOV1 Window
White finish double glazed 1174w x 914h frame @ 980mm affl c/w K glass, trickle vents, restrictor hinges & locks
uPVC HL4 Window
White finish double glazed 914w x 400h frame @ 1621mm affl c/w K glass, trickle vents, restrictor hinges & locks
Black-Out Blinds
Grey vertical blinds to suit all window sizes

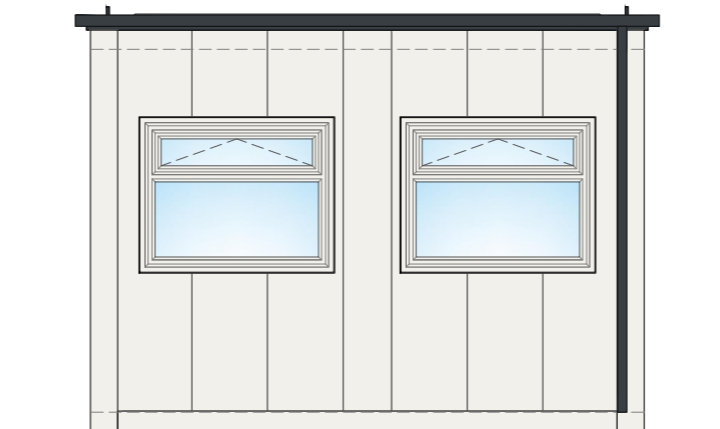
Key

980 Steel Security Doorset c/w Slot Vision Panel
Solid core doors pre finished in white oak (Highlighted)
3L: 3 Lever Lock
BL: Bathroom Lock
VP: Vision Panel
FD30: 30 Minute Fire Door
SC: Door Closer
IB: Indicator Bolt
trh: Toilet Roll Holder
m: Mirror
h&c: Hat & Coat Hook

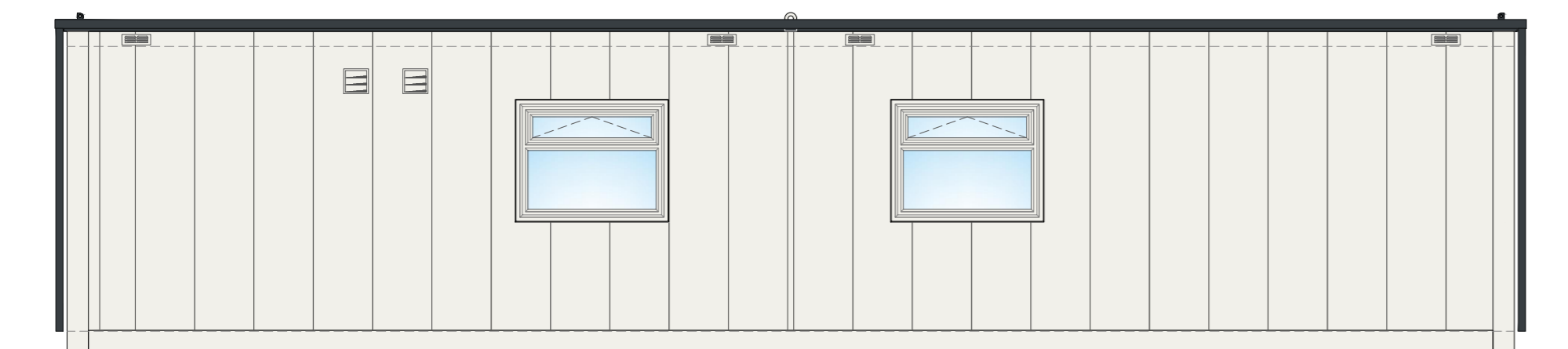
Tolerance: ±2mm
Timber Framing: 120mm
Prod. No.: -
Fleet No.: -
Stickers: -
I.D. Plate: -
Module Weight: -
Laden Weight: -
Max. Lift Weight: -



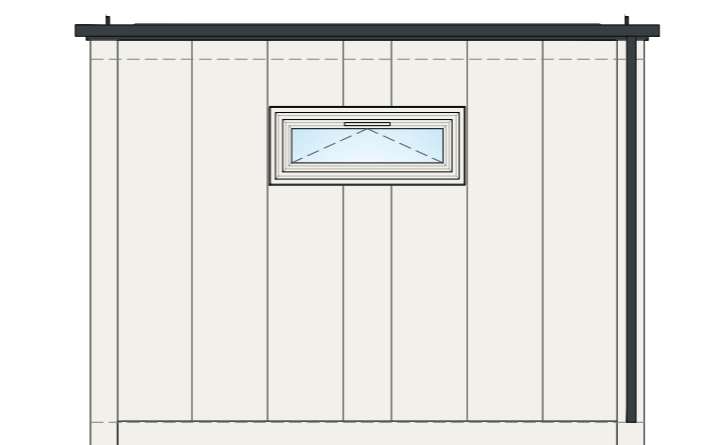
View A
1:50



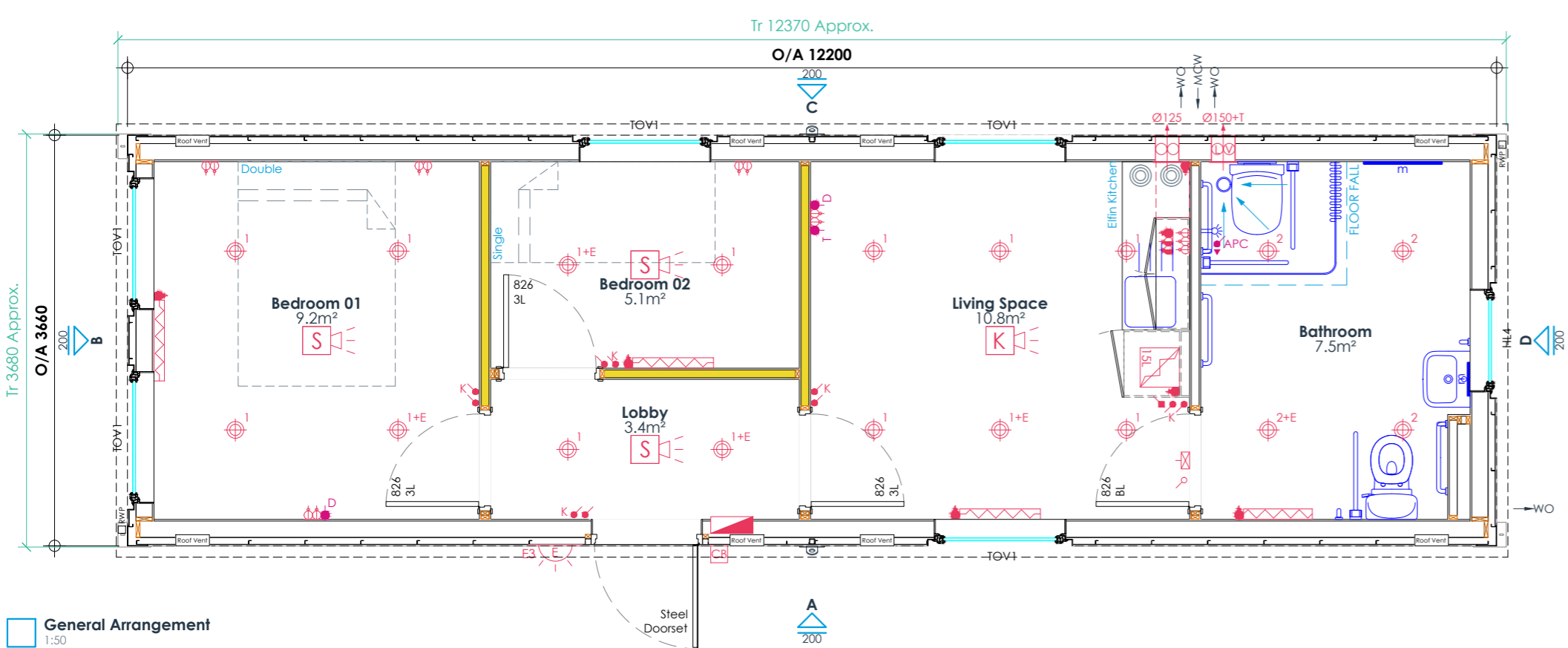
View B
1:50



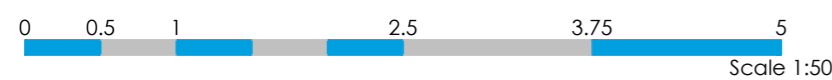
View C
1:50



View D
1:50



General Arrangement
1:50



do not scale from drawing

P01	Issued for approval	ST/SF	01/06/20
rev	description	by/chk	date



client:
Ridge & Partners LLP

project:
Accessible Accomodation

title:
General Arrangement

date: 01/06/20
owner: ST
checked: SF
project ref: 2021376
scale @ A2: As Shown
drawing ref: 100
status: S4
rev: P01

