

Brief Specification

1.6mm panels:
 Base Plates:
 Top Plates:
 Jacklegs:
 Lifting Points:
 Forklift Tunnels:
 Staircase fixings:
 Link Frame:
 Ceiling Height:
 Insulation:

External Finish (Mid-Sheen)

Body:
 Corners:
 Plinth:
 Fascia:
 Jacklegs:
 Door:
 Shutters:

NB.
 Finishes are indicative
 therefore it is the client's
 responsibility to ensure
 these are correct

Internal Finish

Wall Finish:
 Ceiling Finish:
 Floor Finish:
 Timber Door & Window Linings:
 Internal Door Architrave:
 MDF Skirting:
 Shower Room Skirting:
 Worktop:
 Howdens Base Units:
 Shower Area:

Internal Partitions construction

All Partitions 70 x 35mm framing @ 407 ctrs
 Type G 15mm pl/bd foil backed each side:
 Type F as type G c/w 50mm sound insulation:

uPVC TOV3 Window

White finish double glazed 914w x 1080h
 frame @ 960mm affl c/w K glass, trickle
 vents, restrictor hinges & locks

uPVC TOV4S Window

White finish double glazed 2142w x 1780h
 frame @ 300mm affl c/w K glass, trickle
 vents, restrictor hinges & locks

uPVC TOV6 Window

White finish double glazed 2142w x 1080h
 frame @ 960mm affl c/w K glass, trickle
 vents, restrictor hinges & locks

Key

Kinrcroft 990 Security Door
 Solid core doors pre finished in white oak
 3L:
 BL:
 VP:
 FD30:
 SC:
 IB:
 trh:
 m:
 h&c:

Plumbing Notes

Stainless Steel Inset Sink
 Dual Flush WC c/w Ceramic Cistern
 Plastic Push-fit pipework
 Lever Reduced Flow Spray Pattern Taps
 800mm Square Shower Tray c/w Pivot Door

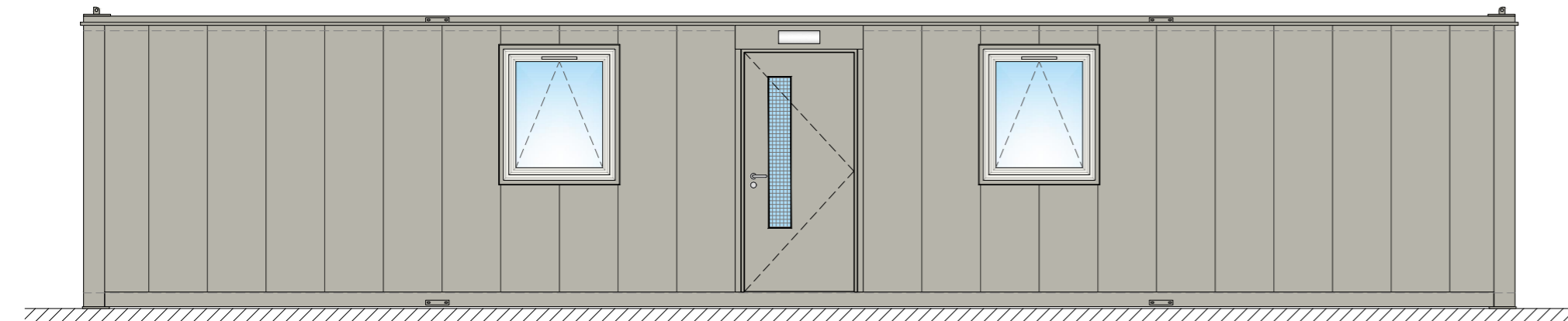
Roof Vents

9" x 3" External Metal Louvre

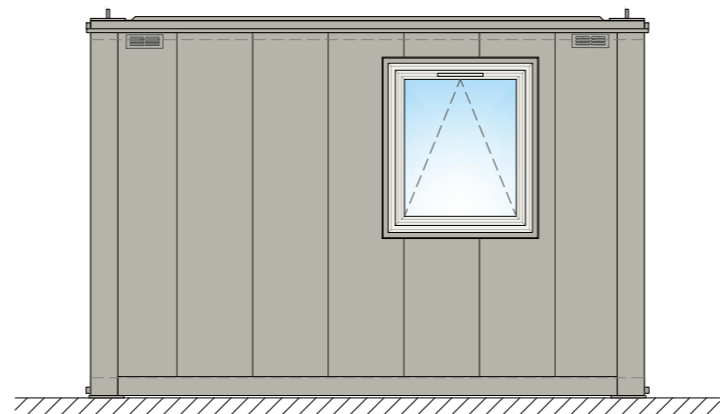
Tolerance: ±2mm
 Timber Framing: 45mm
 Prod. No.:
 Fleet No.:
 Slickers:
 I.D. Plate:
 Module Weight:
 Laden Weight:
 Max. Lift Weight:

Electrical Key

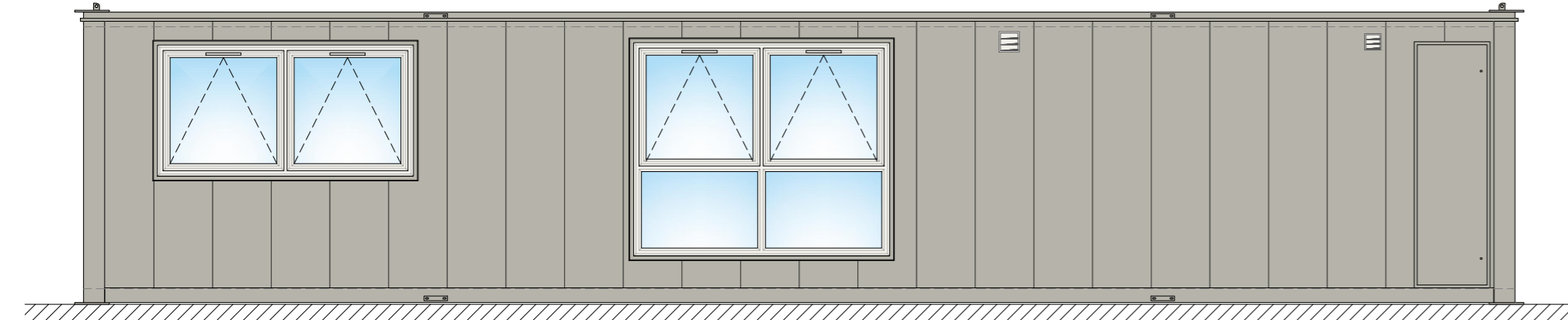
- Recessed Single Phase Consumer Unit c/w Surge Protection
- Connection Box
- Recessed LED Downlight
- LED Emergency Light c/w Legend
- LED External Emergency Light
- Light Switch
- Test Switch
- Panel Heater (Size Stated) c/w Onboard Controller
- Heated Towel Rail
- Double Sockets @ 500mm affl
- Double Sockets @ 1067mm affl
- Single Socket @ 500mm affl Switched @ 1067mm affl
- 45A Cooker Connection @ 1067mm affl
- Shaver Socket @ 1067mm affl
- Single Data Socket @ 500mm affl (Linked Together)
- Telephone Sockets @ 500mm affl
- 15L Under Sink Water Heater
- 7kW Electric Shower c/w Pull Cord Isolator
- Extract Fan (Size Stated)
- PC - Pull Cord
- SELV Extract Fan (Size Stated)
- T - Timer
- Fan Controller & Recessed Transformer



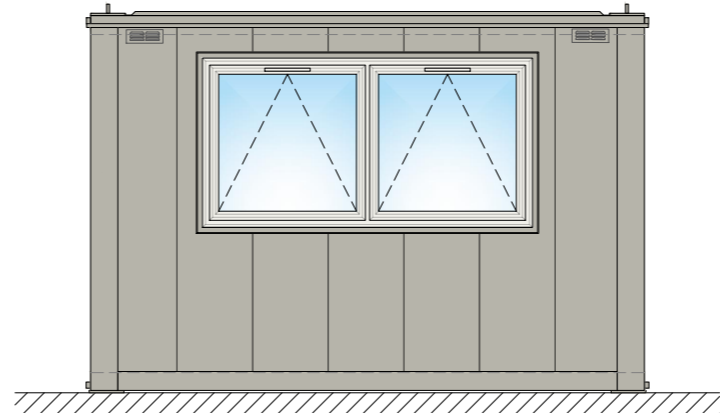
View A
1:50



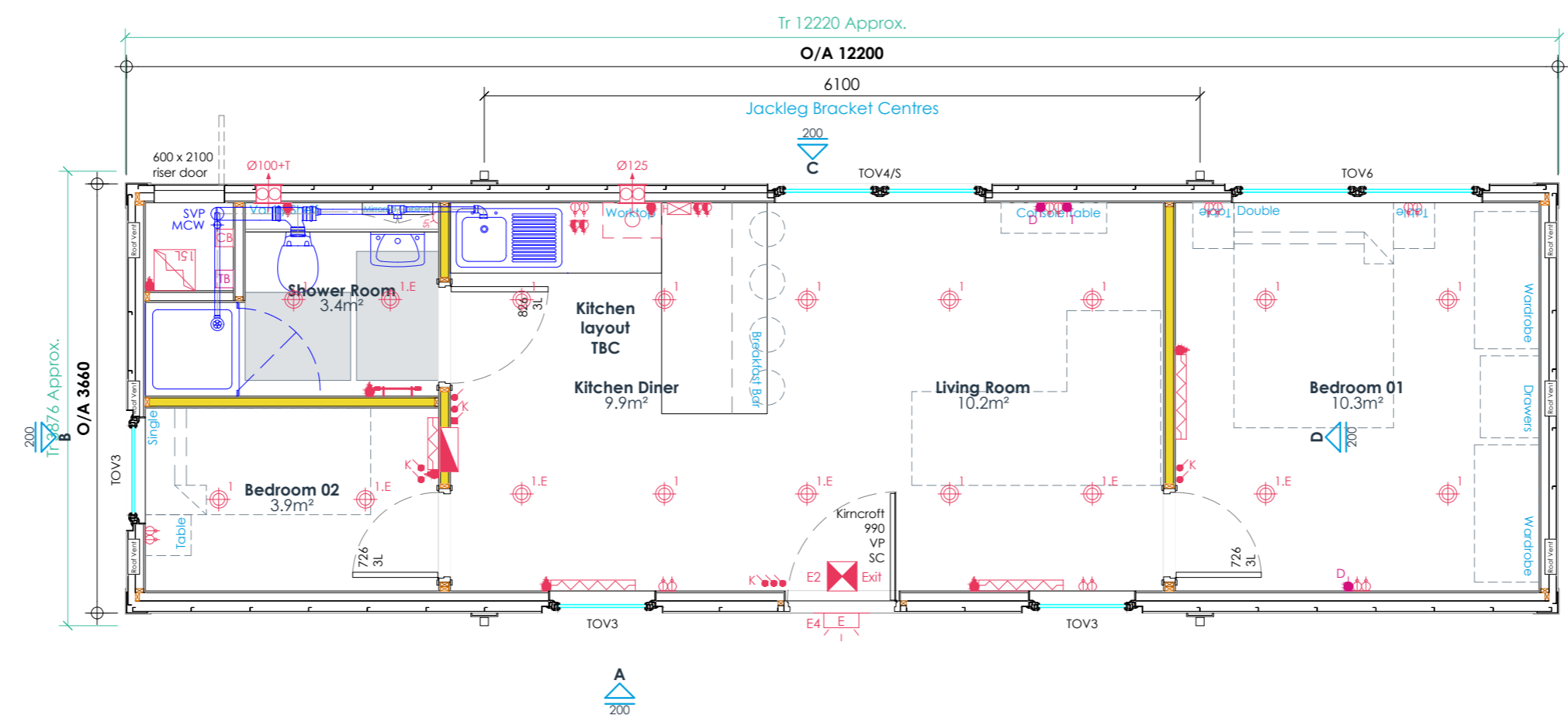
View B
1:50



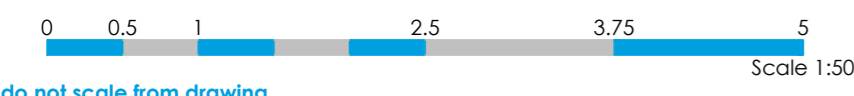
View C
1:50



View D
1:50



General Arrangement
1:50



do not scale from drawing

rev	description	by/chk	date
P03	Revised to comments, window relocated & bedroom layout amended to suit	ST	06/05/20
P02	Issued for approval	ST/SF	06/05/20
P01	Issued for approval	ST/SF	12/03/20



client:
 project:
Display Accomodation Cabin
 title:
General Arrangement

date: 12/03/20
 project ref: 2021247
 drawing ref: 100

owner: ST
 status: S4

checked: SF
 scale @ A2: As Shown
 rev: P03

