

Brief Specification.

- 1.6mm panels: 2 Corri Profile
- Base Plates: Std Slotted
- Top Plates: Std top lift
- Jacklegs: Brackets only
- Lifting Points: N/a
- Fork Lift Tunnels: N/a
- Staircase fixings: Fixing Bolts
- Link Frame: N/a
- Ceiling Height: 2235mm.
- Insulated walls & roof 60mm.

Key.

- 2X5DL - 2No 5 lever deadlock
- RC - Roller Catch
- 2L - 2 Lever Lock
- IB - Indicator Bolt
- th - Toilet Roll Holder
- m - Mirror

External Finishes

- Main Body: **TBC**
- Fascia & gutters: **TBC**
- Jacklegs: **TBC**
- Plinth: **TBC**
- Door: **TBC**
- Shutters: **TBC**

Internal finish

- Walls: **Cream Vinyl Faced Plasterboard**
- Ceiling: **White Vinyl Faced Plasterboard**
- Floor Polyflor XL 2mm; **Mushroom 9110**
- Toilet Floor Polysafe Non Slip 2mm; **Elmwood**
- Plastic door & window lining: **Cream**
- Internal Door Architrave: **N/a**
- Plastic skirting: **Brown (2 part)**
- Top lath: **Brown (2 part)**
- 'H' Sections: **To Suit Board Finish**
- Internal Corners: **Brown (2 part)**
- Shelving: **TBC**

Windows - Aluminium

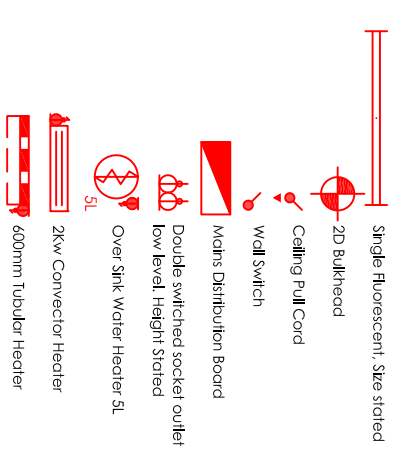
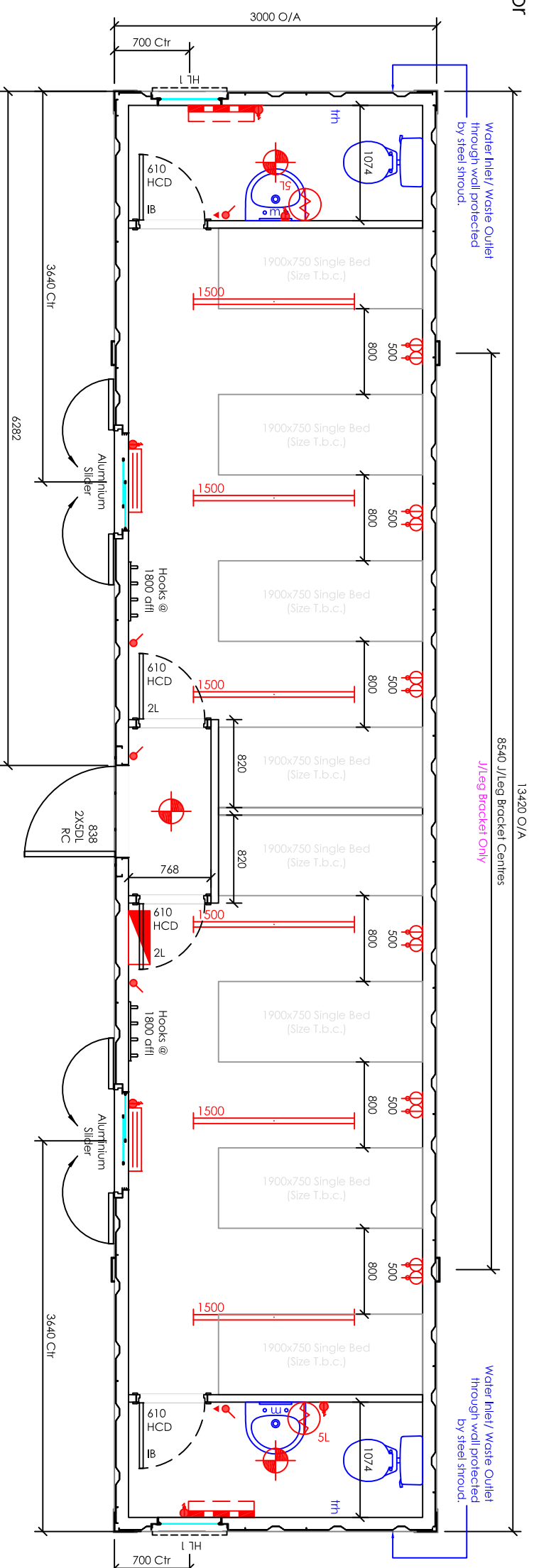
- Mill finish single glazed
- HL1 600w x 300h
- HL Frame @ 1721mm offli
- c/w Galv Mesh Guards

Timber Framing: 45mm

- Prod No:**
- Fleet No:**
- Stickers:**
- ID Plate:**

Windows - Aluminium

- Mill finish single glazed
- Slider 914h x 914h
- @ 980mm offli c/w
- Kimcroft Shutter



Drawing Approval
 Signed: _____
 Date: _____



Client: _____
 Title: **Plan Layout**

Project: **Anti Vandal
 44'x10' Sleeper Unit**

Date: 19.07.17
 Dwg No: 06.5069.A100
 Drawn: MC
 Scale: 1:50 @ A3
 Rev: _____