

Brief Specification: Profiled Steel

1.6mm Panels: 2 Corri Profile
 Base Plates: Std Slotted
 Top Plates: Blank
 Jacklegs: -
 Lifting Points: Low Level Only
 Forklift Tunnels: -
 Staircase Fixings: -
 Link Frame: -
 Ceiling Height: 2235mm
 Insulation: Roof 60mm Mineral Wool
 Walls 60mm Mineral Wool
 Steel Floor Panel
 c/w Lifting Eyes 17-01B Non-Std

External Finish: Mid-Sheen

Body: TBC
 Corners: TBC
 Plinth: TBC
 Fascia: TBC
 Jacklegs: -
 Door: TBC
 Shutters: -
 Paint Type: Zinfoss 250
 Finishes are indicative. It is the client's responsibility to ensure these are correct

Door: ED01

Single White uPVC 2xG Door
 Top: Obscured (Clear Tuff Glass)
 Bottom: Infill Panel
 Low threshold, outward opening.
 To fit aperture 925 x 2100mm.

Door: ED02

Double White uPVC 2xG Door
 Clear (Clear Tuff Glass)
 Low threshold, outward opening.
 To fit aperture 1800 x 2100mm.

Window: W01 (FOV)

White finish uPVC double glazed 914w x 1080h
 frame @ 900mm affl c/w clear K glass, trickle
 vents, restrictor hinges, escape hardware & locks
Window: W02 (FOV)
 White finish uPVC double glazed 600w x 1080h
 frame @ 900mm affl c/w obscured K glass, trickle
 vents, restrictor hinges, & locks

Plumbing

Stainless Steel Inset Sink c/w Mixer Tap
 Ceramic BTW Pan c/w Dual Flush Cistern
 460mm 1TH WHB c/w Mixer Tap
 1000 x 800mm Shower Tray c/w Sliding Screen
 Spray Pattern Taps
 Plastic Pipework

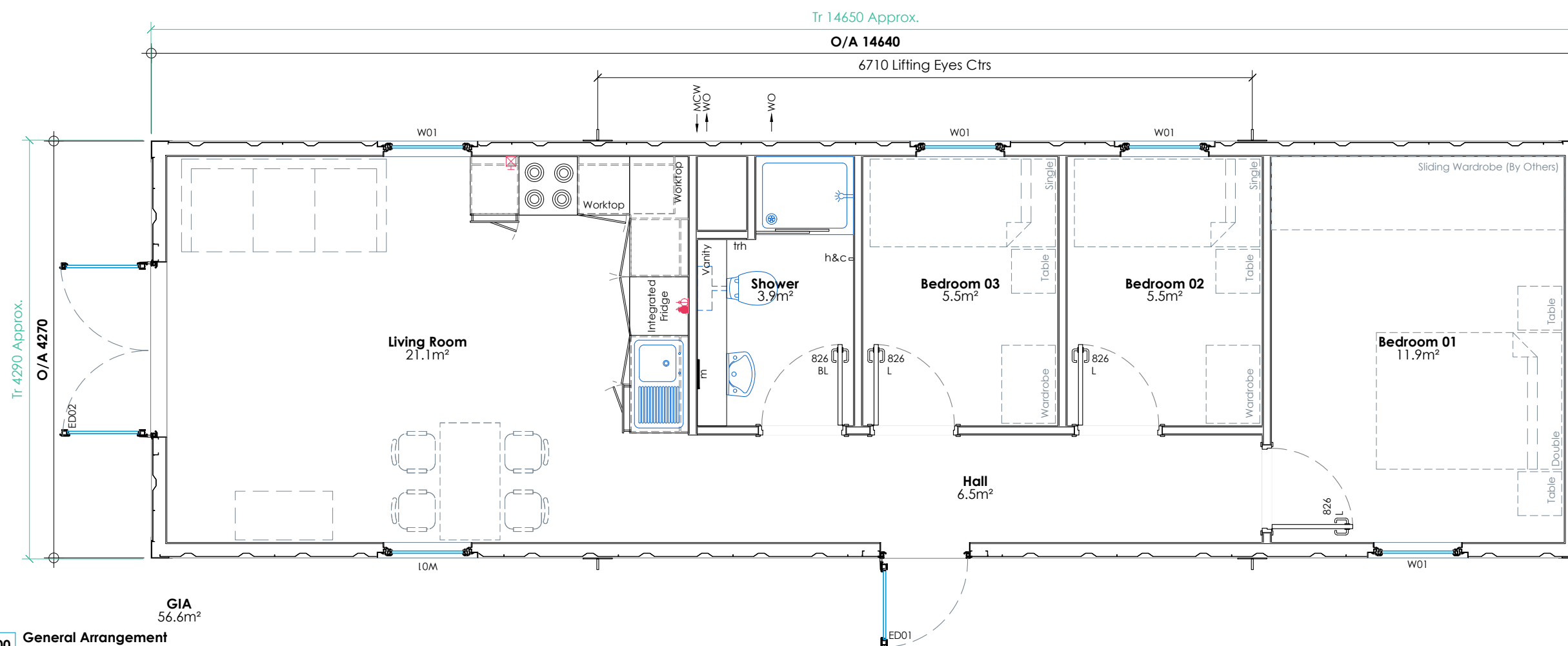
Key

L: Mortise Lever
 BL: Bathroom Lock
 trh: Toilet Roll Holder
 m: Mirror
 h&c: Hat & Coat Hook
 WO: Waste Outlet
 MCW: Mains Cold Water Inlet
 Waste & Water Protected By Steel Shroud

Tolerance: ±2mm
Timber Framing: 70mm
Partition Framing: 70mm
Prod. No.: -
Fleet No.: -
Stickers: -
I.D. Plate: -
Module Weight: -
Laden Weight: -
Max. Lift Weight: -

Internal Finish

Wall Finish: TBC
 Ceiling Finish: TBC
 Floor Finish: TBC
 Plastic Door & Window Linings: TBC
 Internal Door Architrave: TBC
 Plastic Skirting: TBC
 Top Lath: TBC
 'H' Sections: To Suit Board Finish
 Internal Corners: TBC
 Internal Doors: Oak Veneer Solid Core
 Howdens Cabinets: Greenwich Gloss - TBC
 Worktop: TBC



rev	description	by/chk	date
P03	Revised to client comments, unit length increase	ST	27.06.23
P02	Revised to client comments, width increased & layout adjusted to suit	ST	19.06.23
P01	First issue		



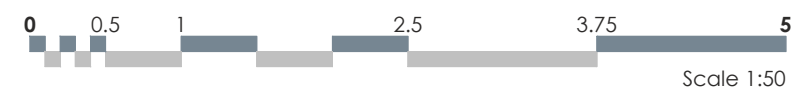
client
Alf Gray

project
Accommodation Unit

title
General Arrangement

date	design lead	checked
09.06.23	ST	-
project ref		scale @ A3
2324649		As Shown

PRELIMINARY



dwg ref
100
rev
P03

00 General Arrangement
1:50

GIA
56.6m²